

# MAPLE VILLAS

*By Anmol Group*



# Colony Layout



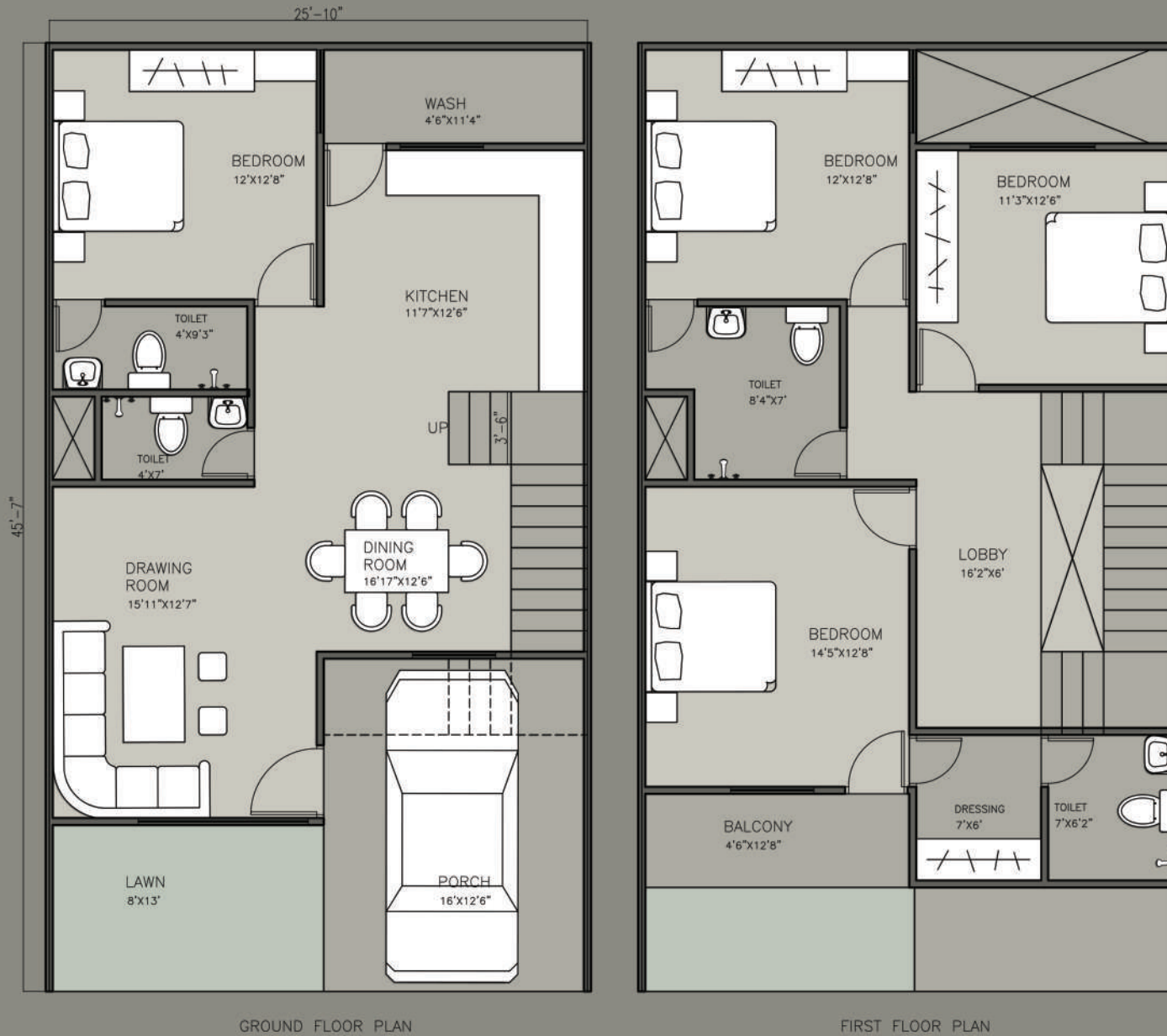
## Area Statement

Plot Number	Area
1	1170sqft
2	1180sqft
3	1190sqft
4	1190sqft
5	1180sqft
6	1160sqft
7	1130sqft
8	1100sqft
9	1080sqft
10-22	1120sqft



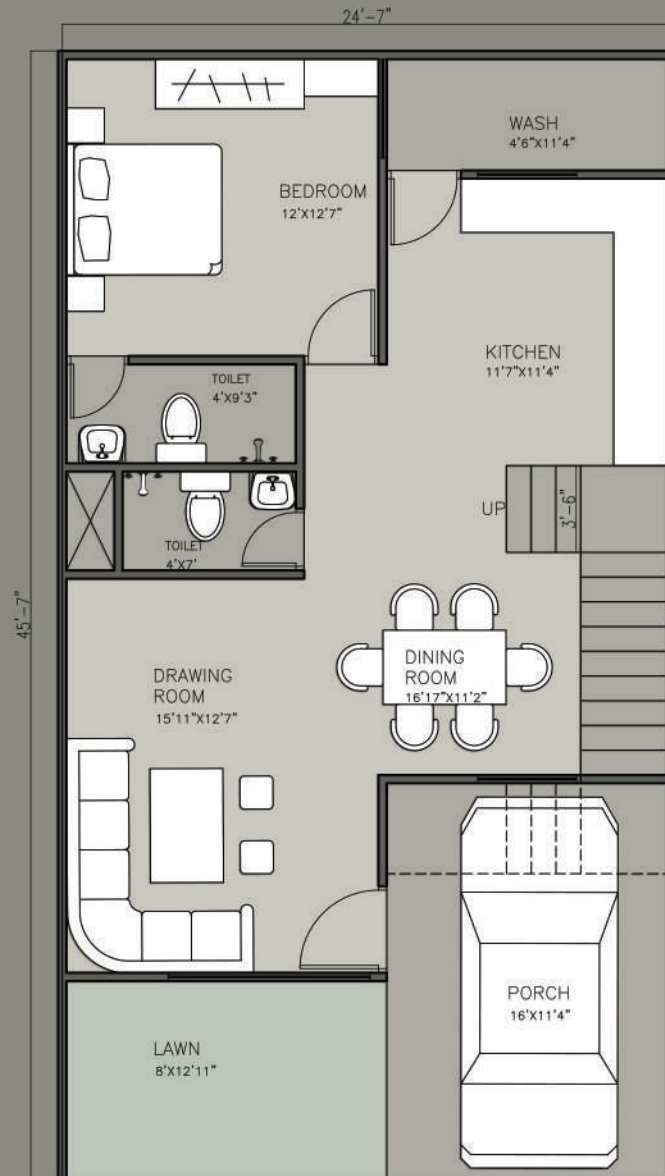


Enjoy Luxury like never before. Anmol Group brings to you Maple Villas, premium 4BHK villas at Badwai Bhopal.

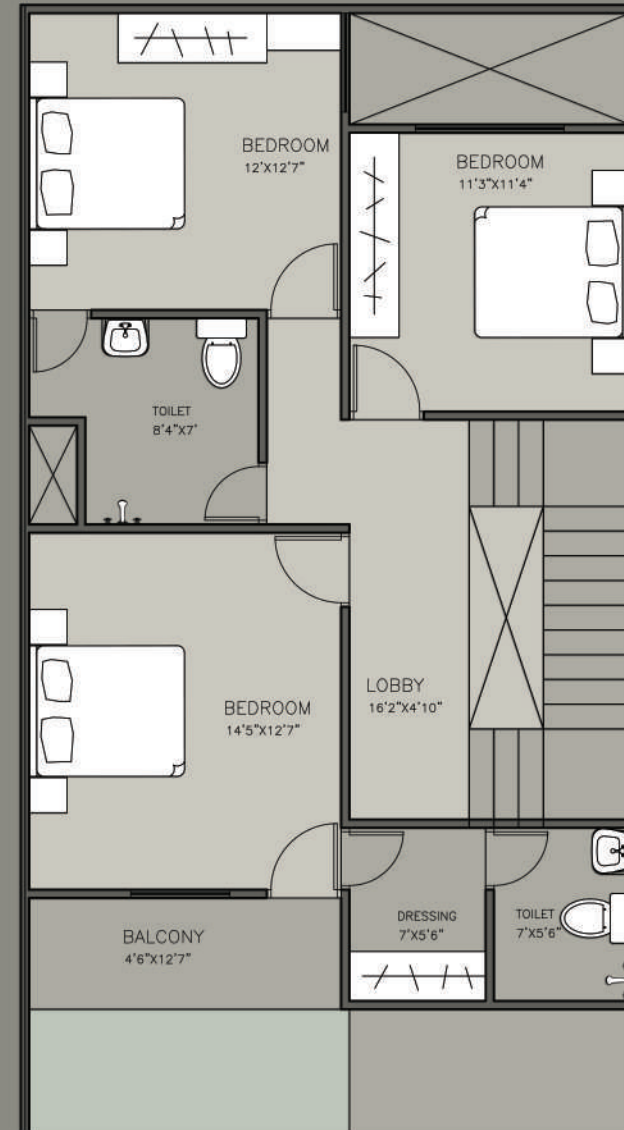


## Typical Floor Plans for Plot 1-9

The above mentioned dimensions are for reference only. Actual dimensions may differ according to plot sizes on site.



GROUND FLOOR PLAN



FIRST FLOOR PLAN

## Typical Floor Plans for Plot 10-22

The above mentioned dimensions are for reference only. Actual dimensions may differ according to plot sizes on site.





“Simplicity is the ultimate sophistication.” – Leonardo da Vinci

# Specifications

## FRAMED STRUCTURE

- RCC framed Structure

## SUPER STRUCTURES

- 8" thick Dummy Ghol Bricks for outer wall
- 4" thick Dummy Ghol bricks for internal walls
- Single coat plaster on internal walls Double coat on external

## DOORS & WINDOWS

- Main Door: Teak Wood frame & flush door shutter.
- Internal Door: Engineered door frame and flush door shutter with all fixtures
- Windows: Aluminium window system with plain glass and mosquito net
- Grills: Mild Steel (MS) grill with enamel paint finish

## KITCHEN

- Granite platform with stainless Steel Sink

## BATHROOMS

- Plumbing and Sanitary Lines design as per professional MEP consultant's design

## PAINTING

- External: Textured finish & two coats of exterior emulsion paint
- Internal: Smooth putty finish with two coats of premium acrylic emulsion paint

## FLOORING

- Living, dining: 600 x 600 mm vitrified tiles
- Master bedroom: 600 x 600mm
- Other bedrooms: 600 x 600 mm
- Bathrooms: Anti-skid tiles
- Corridors: Granite / Tiles
- Utility Balconies: Anti-skid tiles
- Staircase: Granite

## ELECTRICAL

- Concealed Copper Wirings as per MEP consultant's design
- Power outlets for air conditioners in all bedrooms
- Power outlets for geysers in all bathrooms
- Power outlets for chimney, refrigerator, mixer/grinder in kitchen, and Washing machine in utility area
- Three phase supply for each unit & individual meter boards
- One Miniature Circuit breakers (MCB) for each room at the main distribution box
- Elegant designer modular electrical switches

## EXTERIOR FEATURES

- Stamped concrete roads
- Well maintained park for residents
- Street lights at optimum distance
- Covered campus



# Location



For Bookings Contact:  
+91-9131537976,+91-8889323232

*Anmol Group*

Architectural Design & Visualisation by:  
Estetico Architecture Studio  
+91-8871895060,+91-8962508912

*Estetico*  
ARCHITECTURE STUDIO